



TRIM CHOPPERS

Trim choppers for plastic waste

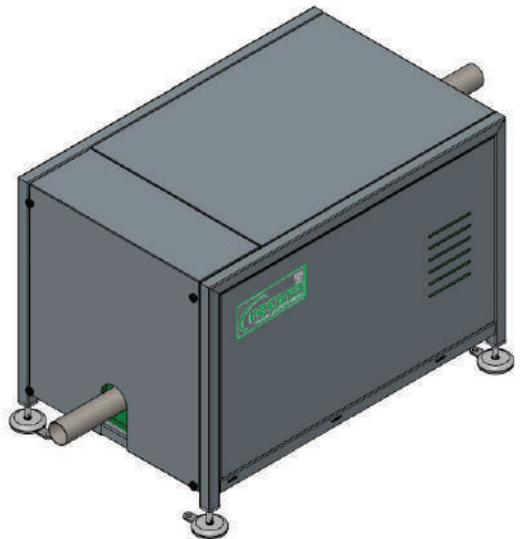
The trim choppers are designed to shred plastic or paper waste and allow the waste to be compacted and facilitate its disposal.

Taking advantage of its high speed and large cutting capacity, the trim chopper is therefore able to reduce the volume of the waste sucked up to 20 times.

To facilitate inspection and maintenance of the blade, the trim chopper is equipped with a quick band for opening the cone.

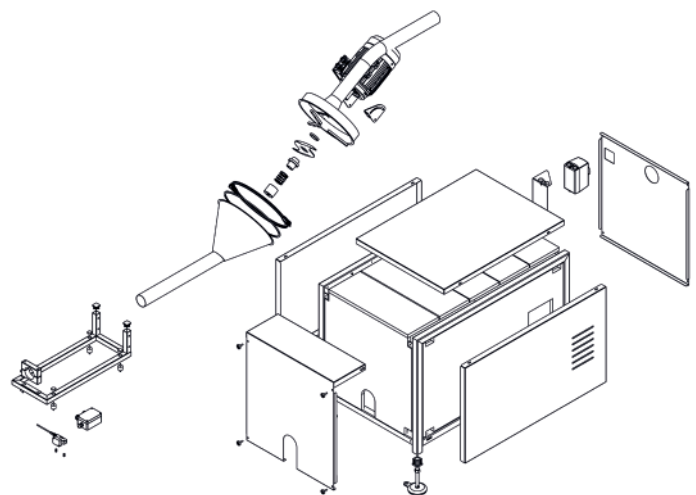
Safety is ensured by a position micro that deactivates the motor when the access fairing opens.

To be combined with one of our trim exhausters AS series.



TECHNICAL DATA

- > 1.5 kW three-phase motor
- > Magneto-thermal switch integrated in the fairing
- > Possibility of having multiple inputs channelled to a single output
- > Height and inclination adjustment
- > Double involute knife blade made of AISI 440 hardened steel, hardness HRC56
- > Body made of AISI 304 stainless steel, painted frame
- > Modular fairing with passive sound absorber
- > Sturdy steel frame (painted or stainless steel) with screwable and height-adjustable feet
- > Product inlet/outlet \varnothing 70 mm
- > Device built in accordance with the safety standards on minimum distances from hazardous areas UNI EN ISO 13857:2008

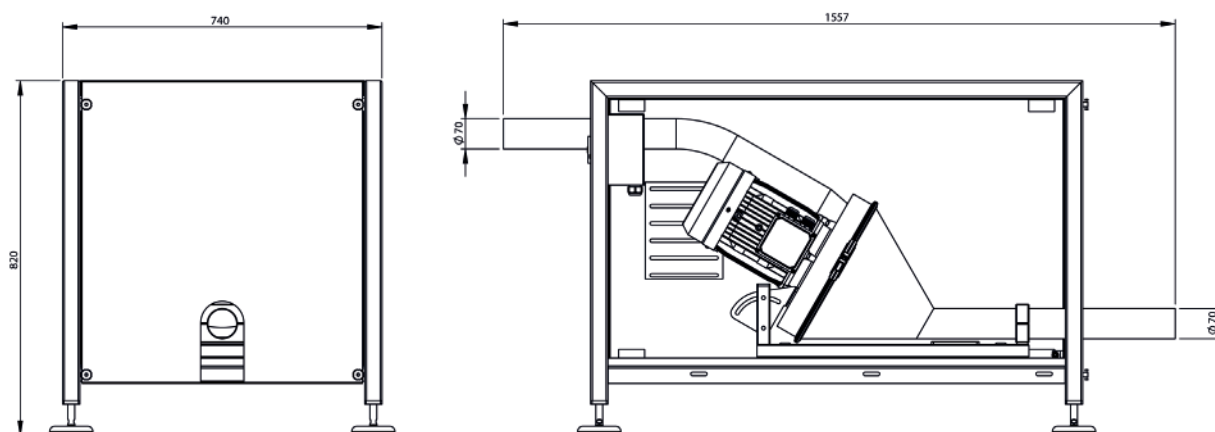


Shredder compliant with the requirements of the Machinery Directive 2006/42/EC and Directives 2014/30/EU, 2014/35/EU.

TRIM CHOPPERS

Trim choppers for plastic waste

OVERALL DIMENSIONS TRIM CHOPPERS



APPLICATIONS

